

SCRIBNER'S MONTHLY.

Vol. II. MAY, 1871. No. 1.



Meeting with several gentlemen who expressed the curiosity, we determined to make the journey in the month of August and September.

The Yellowstone and Columbia, the first flowing into the Missouri and the last into the Pacific, divided from each other by the Rocky Mountains, have their sources within a few miles of each other. Both rise in the mountains which separate Idaho from the new Territory of Wyoming, but the headwaters of the Yellowstone are only accessible from Montana.

The mountains which they do pass, and on the traveler's path, are the most beautiful and the most varied Capital of the world, and the most marvelous that, as long ago as the first contemplated the possibility of exploring an expedition for the express purpose of exploring it. During the past year, the source of the Yellowstone was discovered.

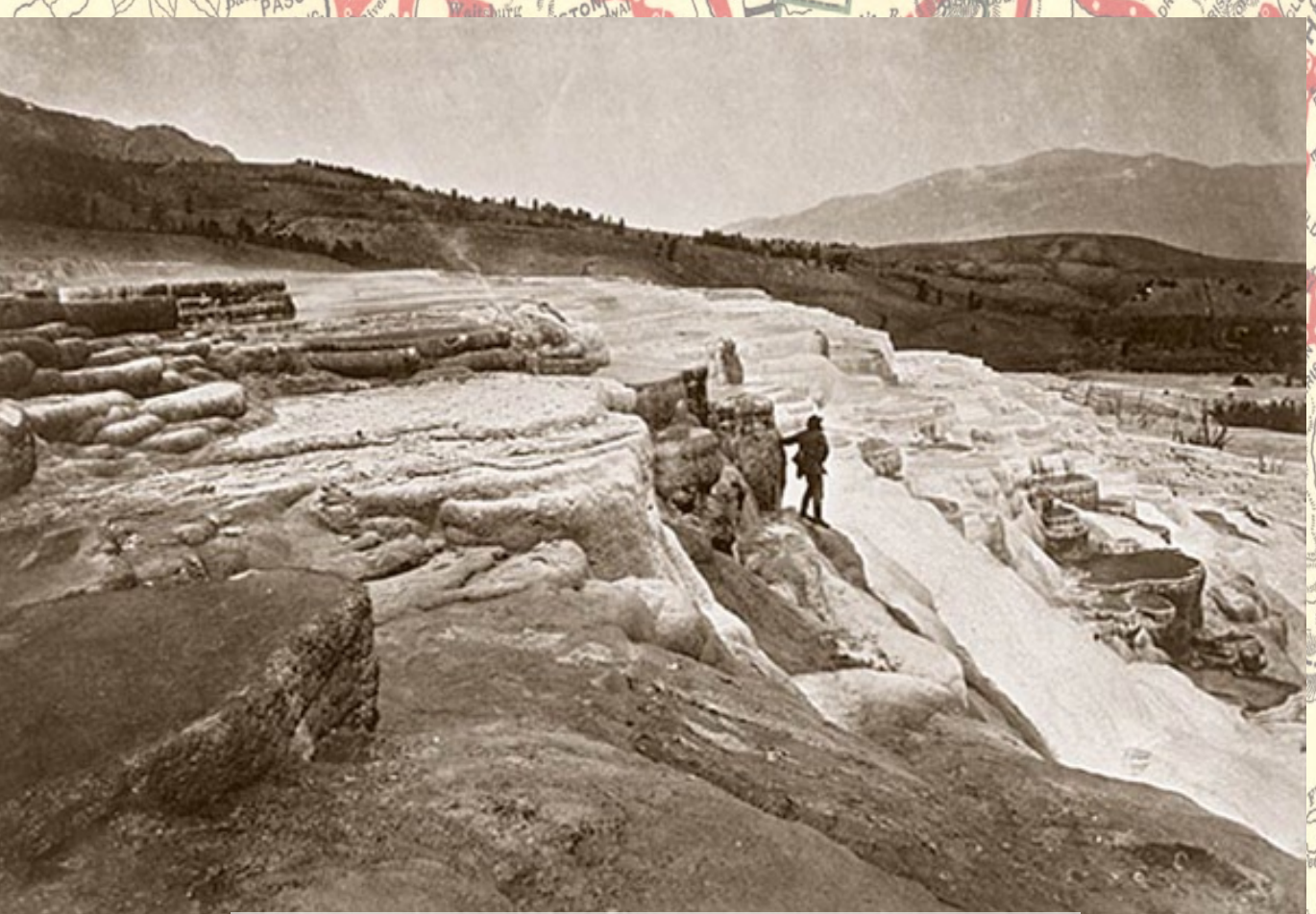
In 1871, American painter Thomas Moran Illustrated this story by Nathaniel Langford in Scribner's Monthly.

Moran used someone else's sketches to do the woodcuts for the article. Most Americans had never seen anything like the fantastic landscape and geological features described in the article and Moran longed to see them for himself.



Moran and early space exploration vehicle. (the photo was retouched by Moran himself)

Nathaniel Langford was related to two of the largest investors in the Northwest Pacific Railroad. He got the railroad's president, Jay Cooke, to secure Moran's inclusion on Ferdinand Hayden's U.S. Geological Survey exploration of the region in 1872.



These two photographs of Moran at Yellowstone were taken by William Henry Jackson, who was also on the U.S.G.S. expedition. He and Moran worked closely together on compositions, and Moran made use of Jackson's photos for later work.



Moran, who famously stated that "I place no value upon literal transcripts from Nature," became the unofficial arbiter of the appearance of that vast nature preserve. He made dozens of versions of certain paintings in different media and for different clientele. Meanwhile, the park became associated with American Manifest Destiny. This complex relationship between large commercial interests, the exploration and definition of 'nature', and the way that visual media are used to present 'facts' is the subject of BPL's third space exploration mission.

# NORTHERN PACIFIC RAILWAY

1900

The next year, The Panic of 1873 caused the collapse of Jay Cooke's Railroad, but by the end of the century the reorganized Northern Pacific Railroad was distributing tourists to Yellowstone and timber to the deforested east.

